

M. Véron – E. Duhamel

Développement d'un modèle opérationnel d'évaluation écosystémique de la sardine Atlantique

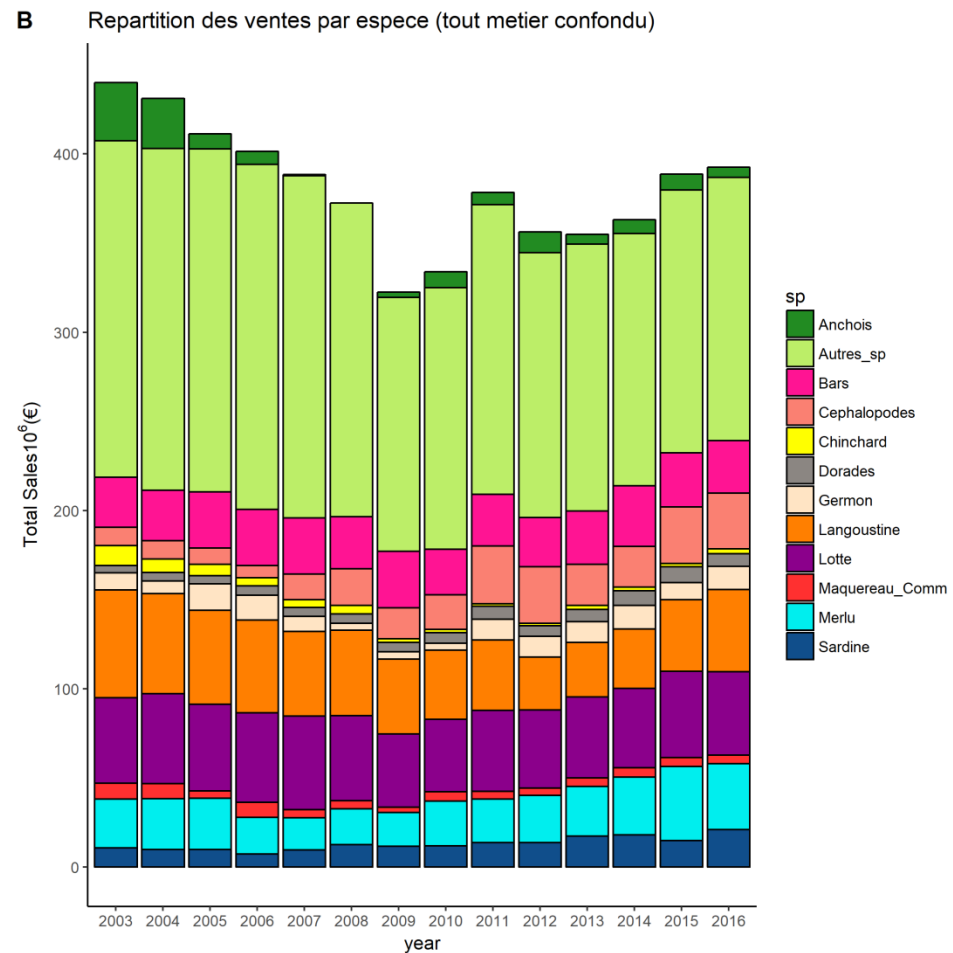
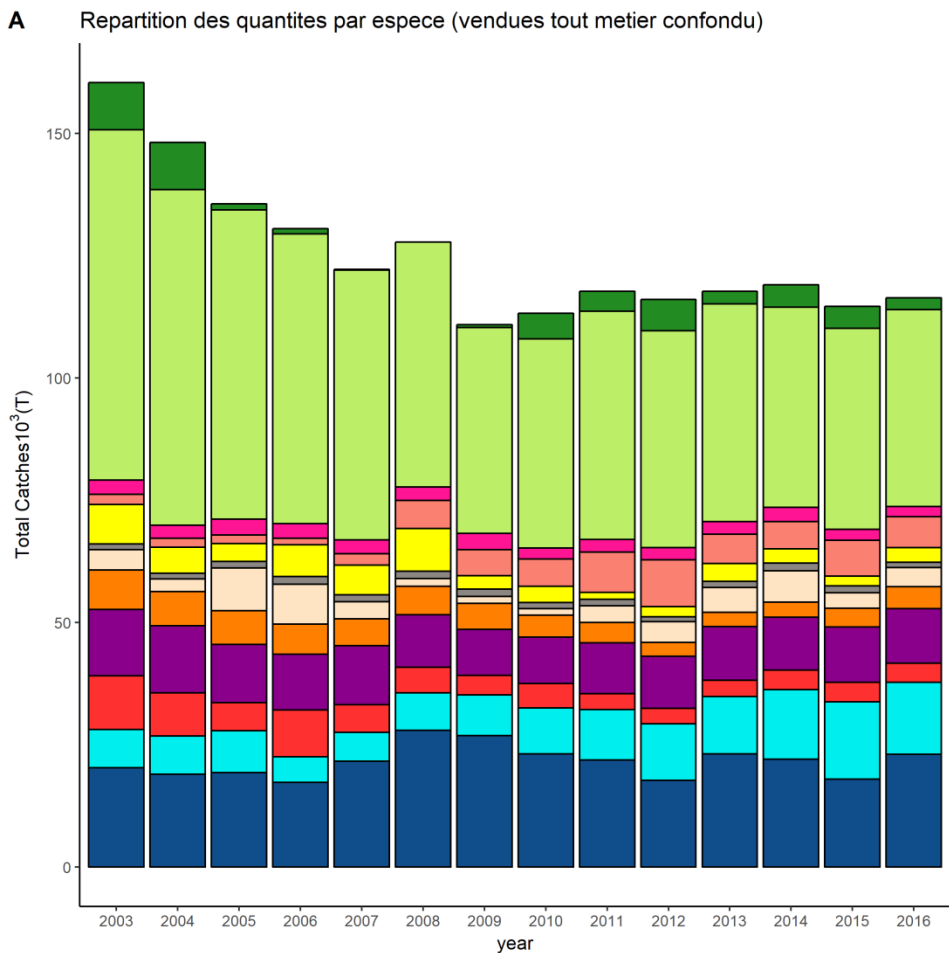


Analyse des données de production de
Sardine dans le golfe de Gascogne sur la
période 2003-2016

La sardine parmi les autres



Répartition des quantités et valeurs débarquées par espèce – INTER-ANNUEL

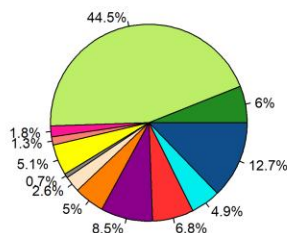


La sardine parmi les autres

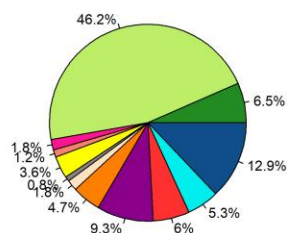


Proportion des quantités par espèce (%) – INTER-ANNUEL

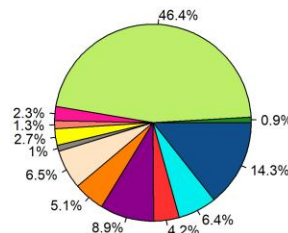
Catches in the Bay of Biscay in 2003



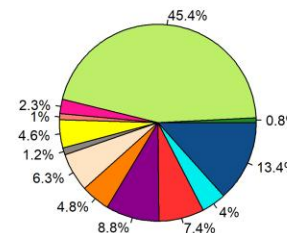
Catches in the Bay of Biscay in 2004



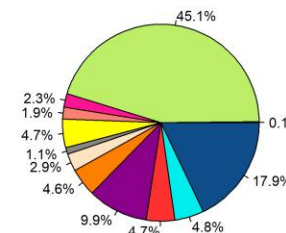
Catches in the Bay of Biscay in 2005



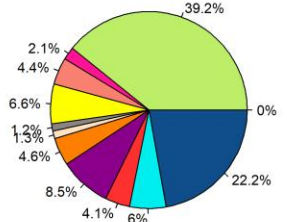
Catches in the Bay of Biscay in 2006



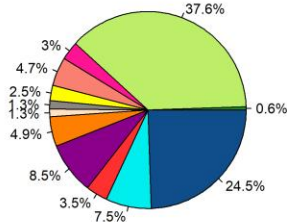
Catches in the Bay of Biscay in 2007



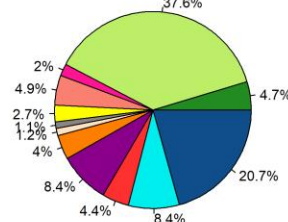
Catches in the Bay of Biscay in 2008



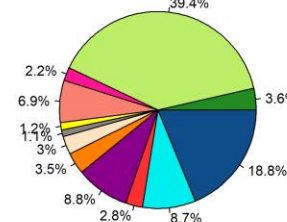
Catches in the Bay of Biscay in 2009



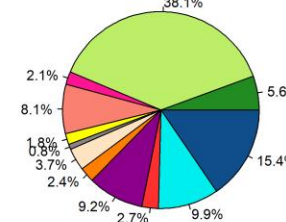
Catches in the Bay of Biscay in 2010



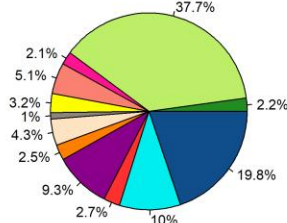
Catches in the Bay of Biscay in 2011



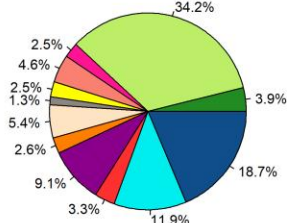
Catches in the Bay of Biscay in 2012



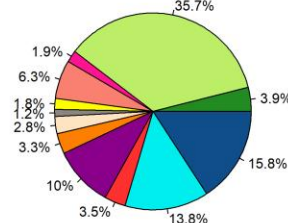
Catches in the Bay of Biscay in 2013



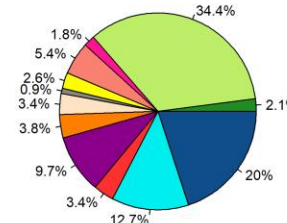
Catches in the Bay of Biscay in 2014



Catches in the Bay of Biscay in 2015



Catches in the Bay of Biscay in 2016

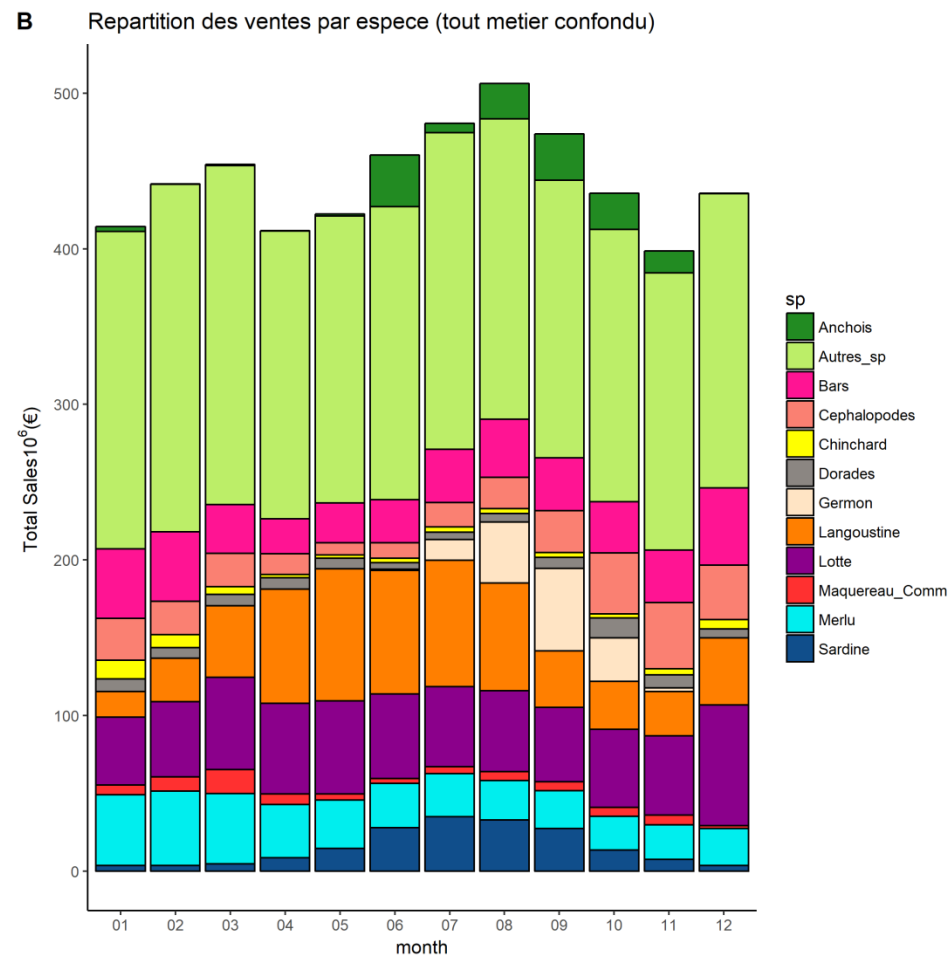
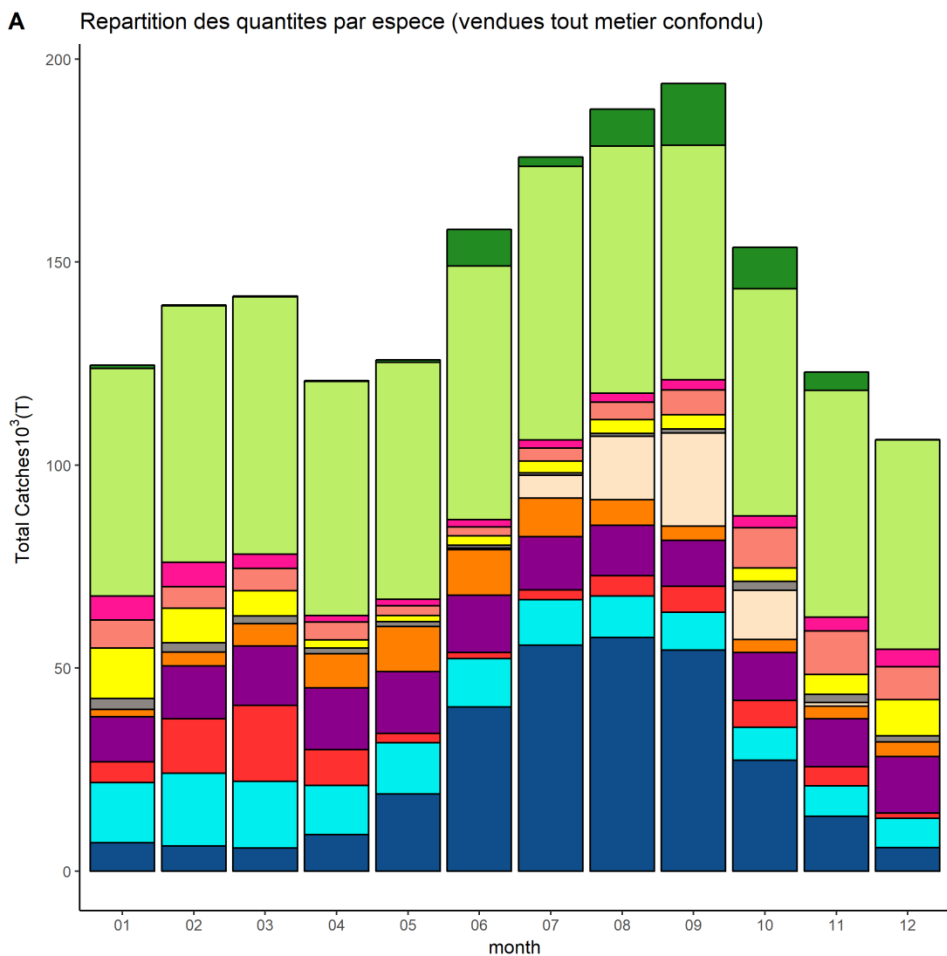


- Anchois
- Autres_sp
- Bars
- Cephalopodes
- Chincharid
- Dorades
- Germon
- Langoustine
- Lotte
- Maquereau_Comm
- Merlu
- Sardine

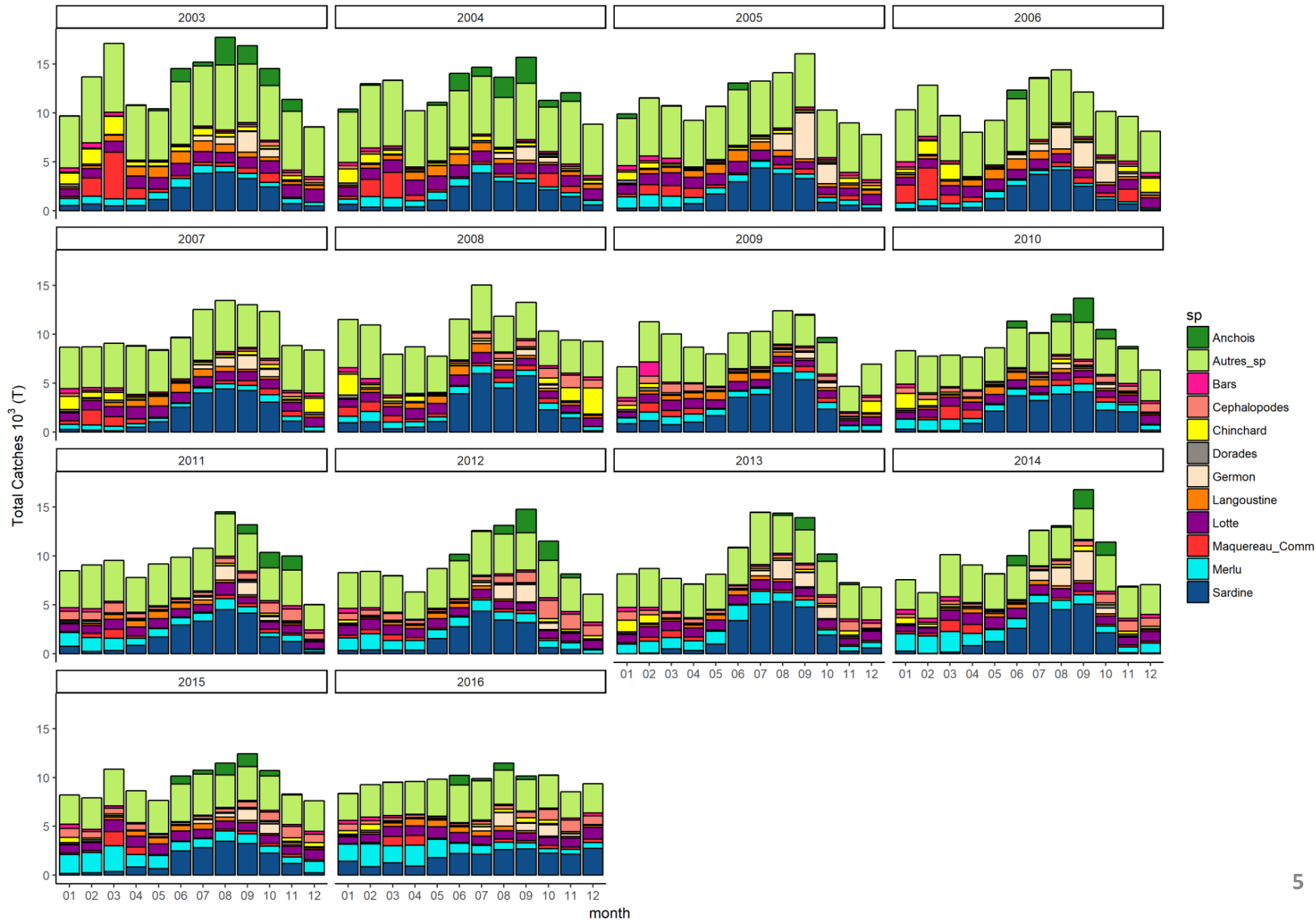
La sardine parmi les autres



Répartition des quantités et valeurs débarquées par espèce (Tonnes)– INTRA-ANNUEL



Saisonnalité interannuelle des quantités vendues





- Données SACROIS brutes agrégées par navire, métier et marée

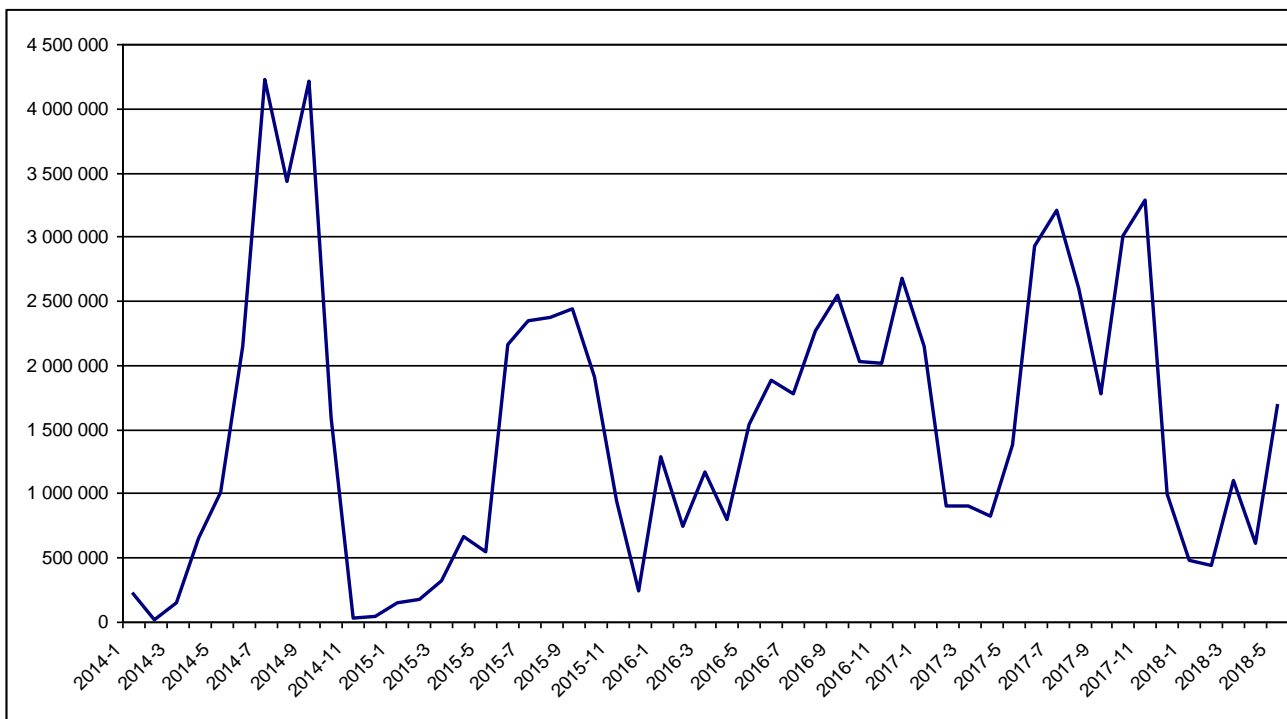
- Période: 2012 – 2016
- Temporalité: Données journalières
- Localisation : Golfe de Gascogne (zone 27 uniquement)

- 23 ports de débarquement dans le GoG

- 148 espèces « recensées »

- Analyses menées sur des marées pour lesquelles la quantité de sardine débarquée est supérieure à 100 kg**

variations mensuelles de la production (2014 – mai 2018)



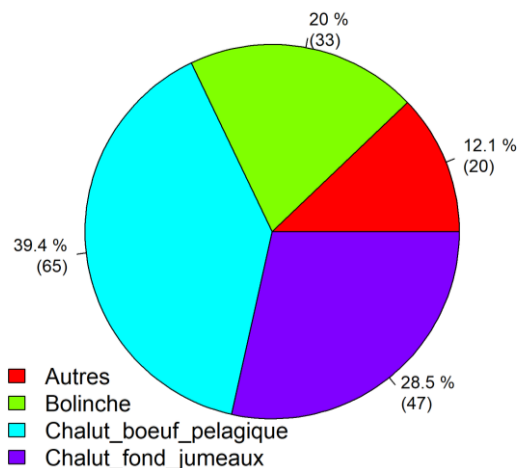
	2014	2015	2016	2017	2018
1	230 296	147 486	1 280 302	2 140 914	477 000
2	7 068	178 630	743 055	906 177	432 386
3	146 884	312 589	1 163 307	904 627	1 102 790
4	654 275	665 146	787 790	821 651	610 715
5	1 005 983	543 183	1 534 269	1 376 658	1 690 483
6	2 146 835	2 153 722	1 878 017	2 928 423	
7	4 225 528	2 337 158	1 774 949	3 208 987	
8	3 426 357	2 370 064	2 262 283	2 589 739	
9	4 214 503	2 440 010	2 543 629	1 775 508	
10	1 582 007	1 911 952	2 019 918	3 006 326	
11	32 122	936 056	2 012 496	3 280 217	
12	39 701	233 090	2 675 843	998 470	

Nombre de navires par métier



Analyses menées sur des marées pour lesquelles la quantité de sardine débarquée est supérieure à 100 kg

Nombre de navires par métier

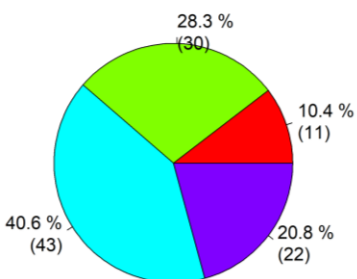


2012 - 2016

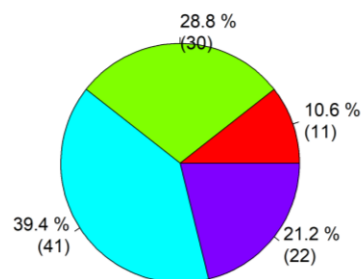
138 Navires ont capturé minimum 100Kg de sardine à la marée

➤ **27 navires ont pratiqué 2 métiers différents sur la série**

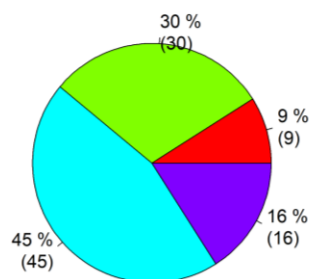
2012



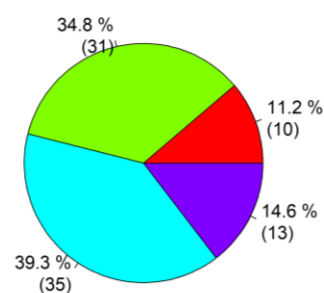
2013



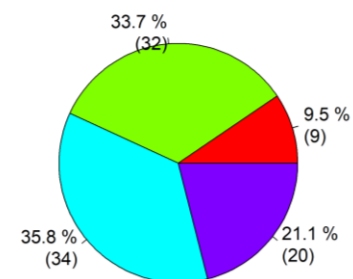
2014



2015



2016

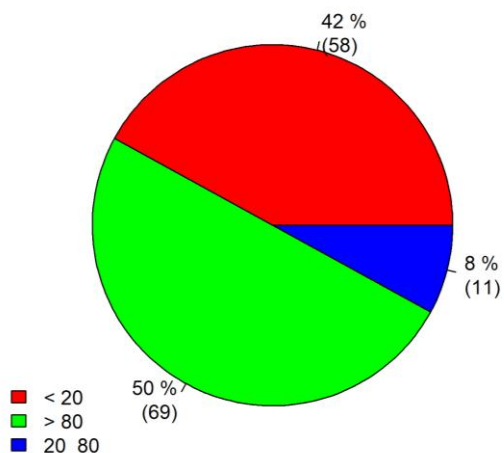


Nombre de navires par niveau de production



Analyses menées sur des marées pour lesquelles la quantité de sardine débarquée est supérieure à 100 kg

Composition des niveaux de production
2012-2016

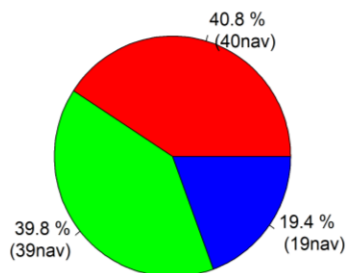


2012 - 2016

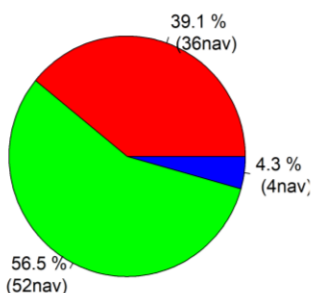
138 Navires ont capturé minimum 100Kg de sardine à la marée

- production TOTALE < 20 Tn : 58 navires
- 20 Tn =< production TOTALE < 80 Tn : 11 navires
- production TOTALE >= 80Tn : 69 navires

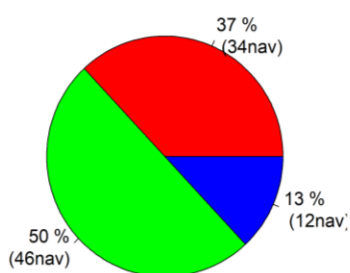
2012



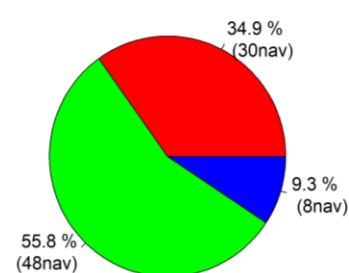
2013



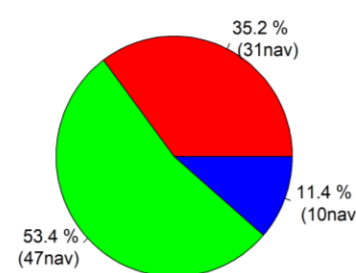
2014



2015



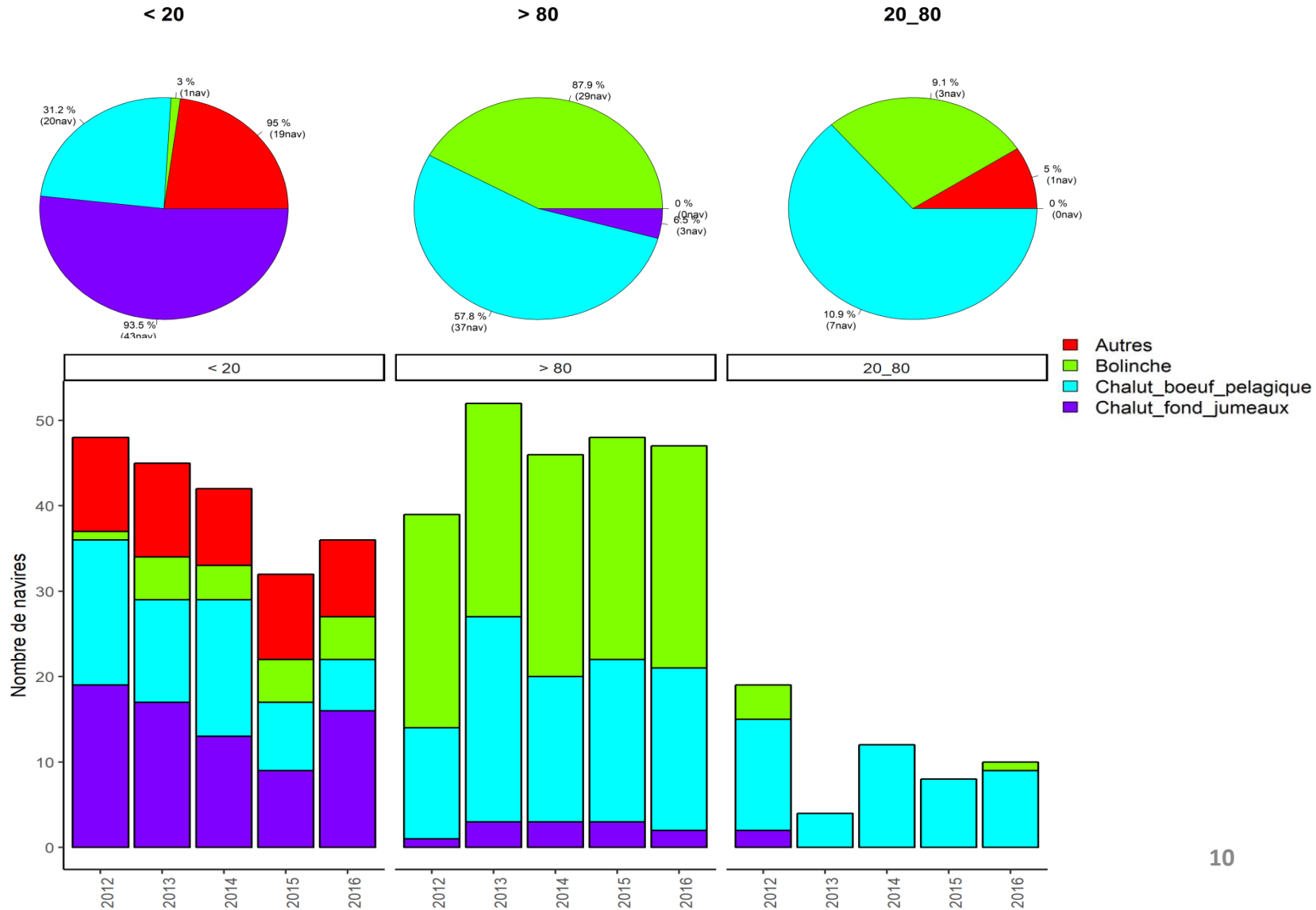
2016



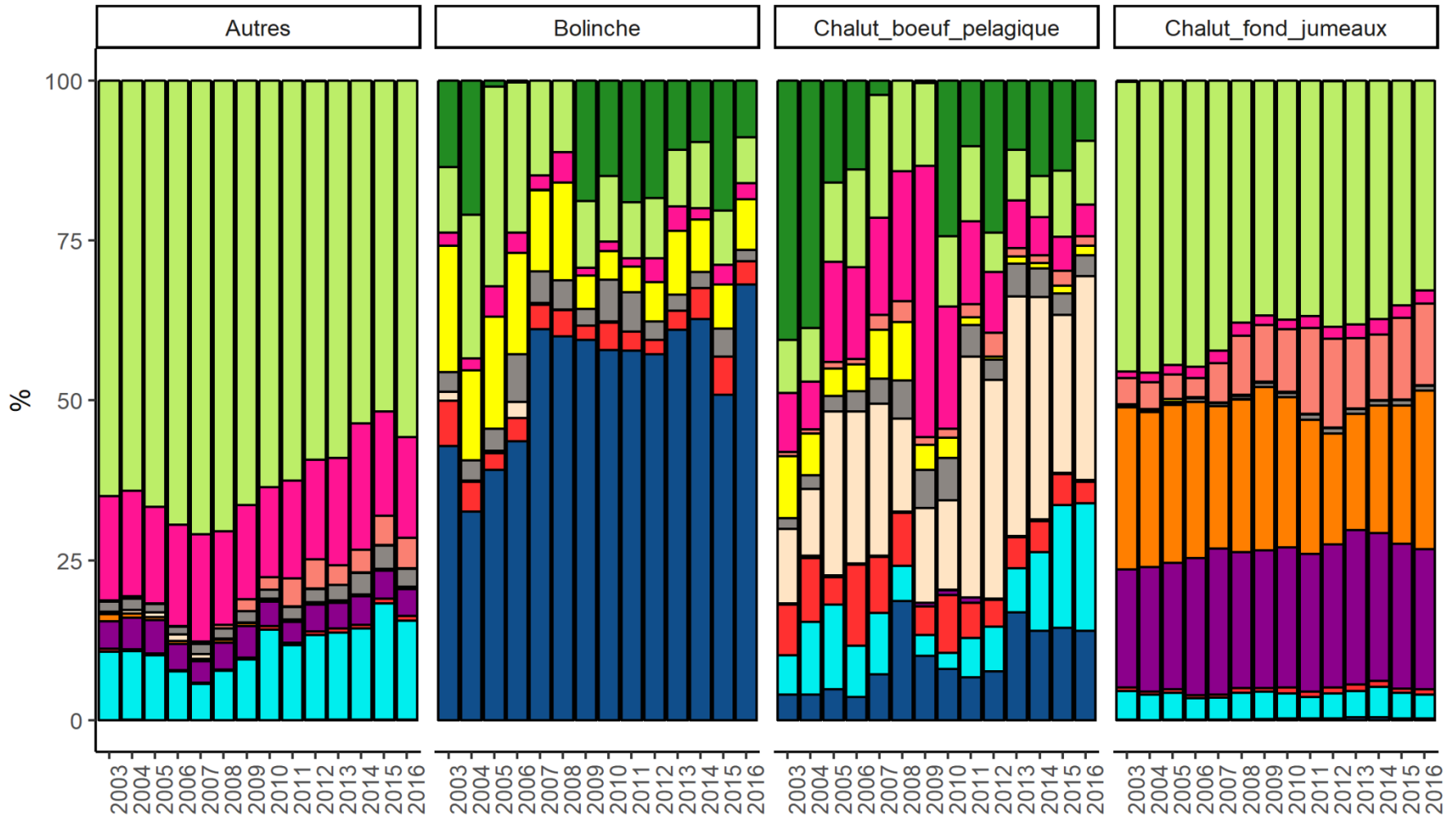
Nombre de navires par niveau de production et métier



☐ Analyses menées sur des marées pour lesquelles la quantité de sardine débarquée est supérieure à 100 kg



Part de la sardine dans le Chiffre d'affaire

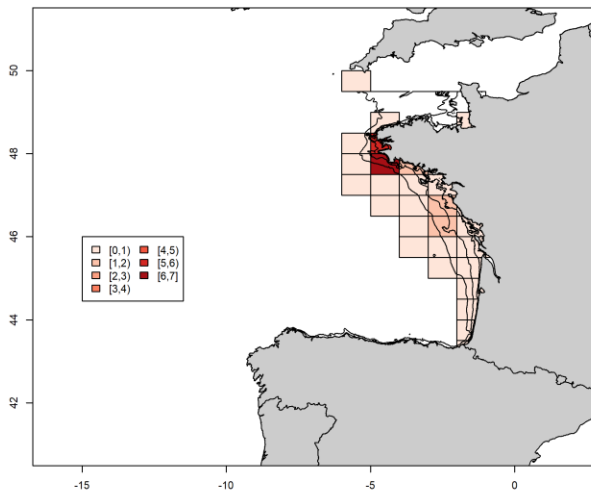


Répartition spatiale des captures de sardine

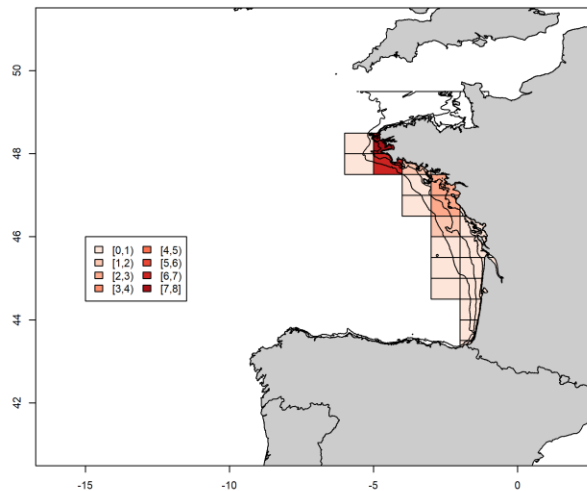


Tout métier confondu

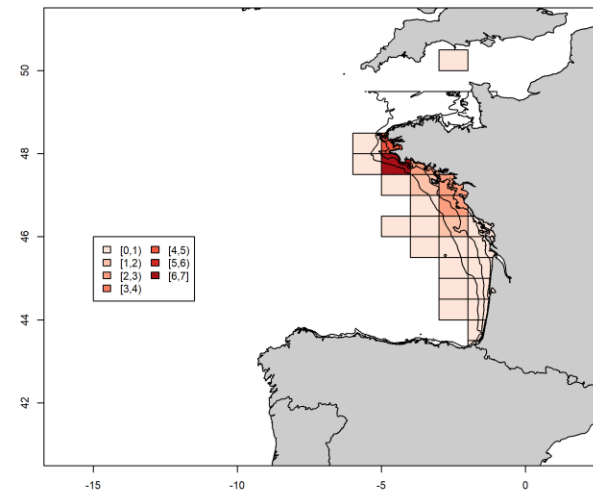
Sardine catches (1E6) kg in 2012



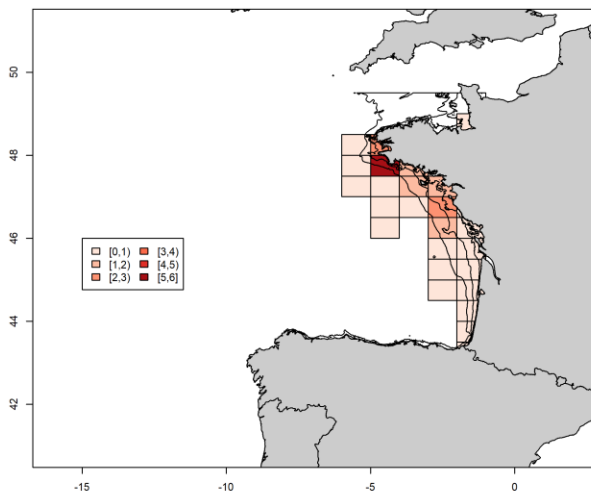
Sardine catches (1E6) kg in 2013



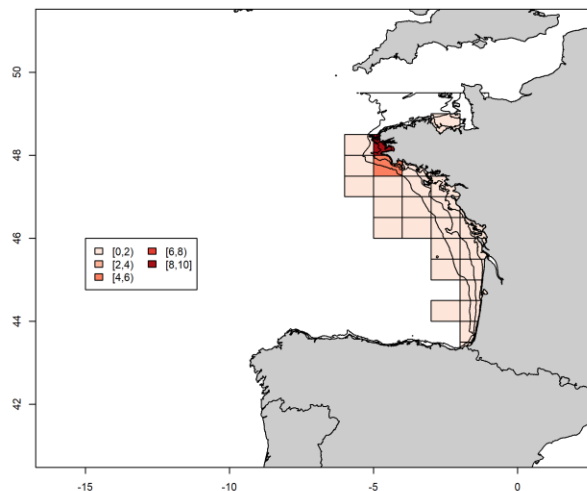
Sardine catches (1E6) kg in 2014



Sardine catches (1E6) kg in 2015



Sardine catches (1E6) kg in 2016

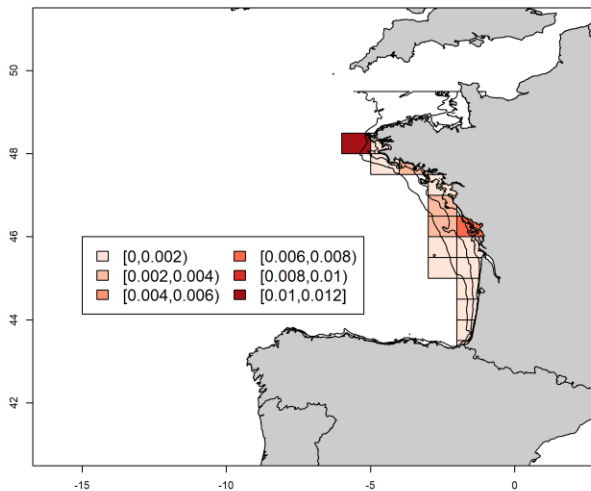


Répartition spatiale des captures de sardine

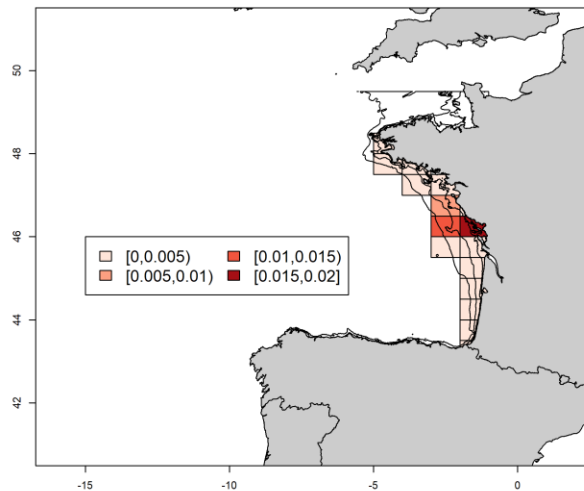


Métier « autres »

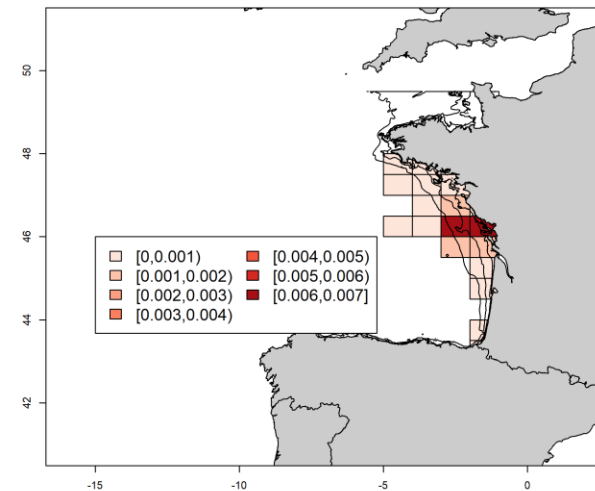
Sardine catches (1E6) kg in 2012



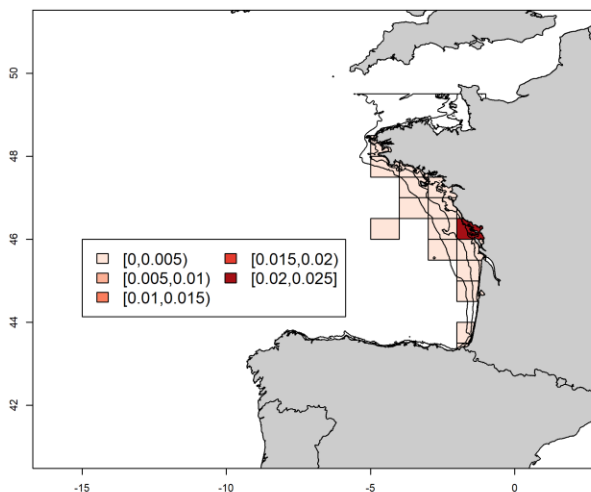
Sardine catches (1E6) kg in 2013



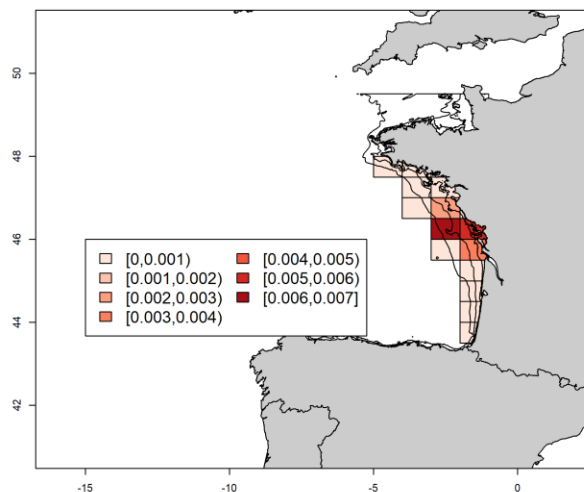
Sardine catches (1E6) kg in 2014



Sardine catches (1E6) kg in 2015



Sardine catches (1E6) kg in 2016



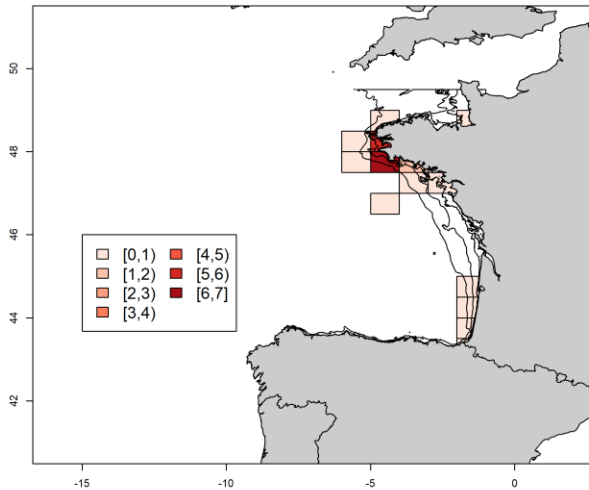
scale approx 1:12,000,000
0 100 200 300 km

Répartition spatiale des captures de sardine

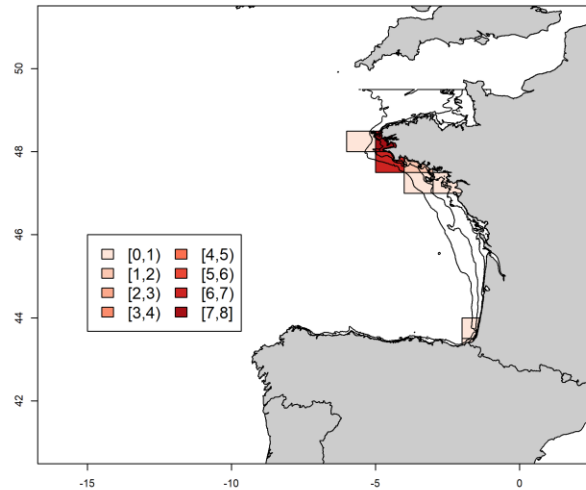


Métier « bolinche »

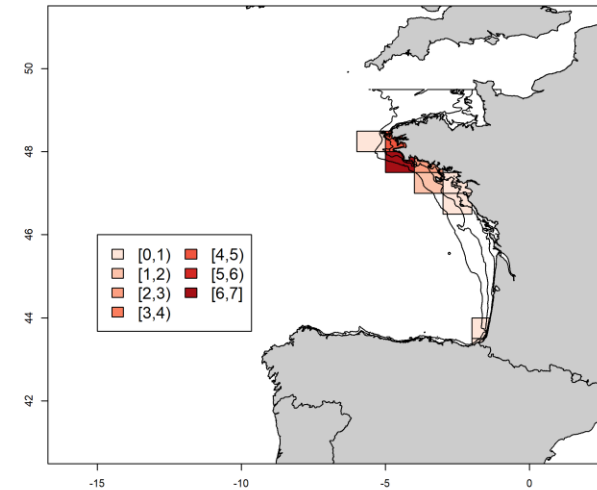
Sardine catches (1E6) kg in 2012



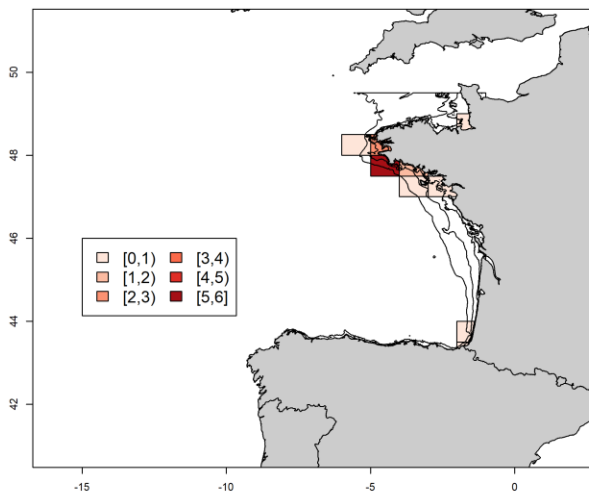
Sardine catches (1E6) kg in 2013



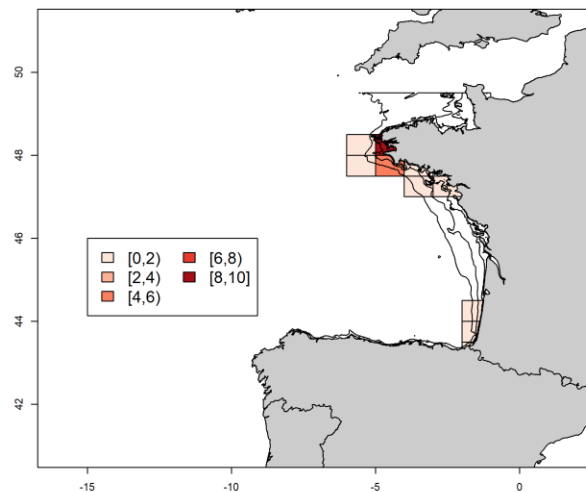
Sardine catches (1E6) kg in 2014



Sardine catches (1E6) kg in 2015



Sardine catches (1E6) kg in 2016



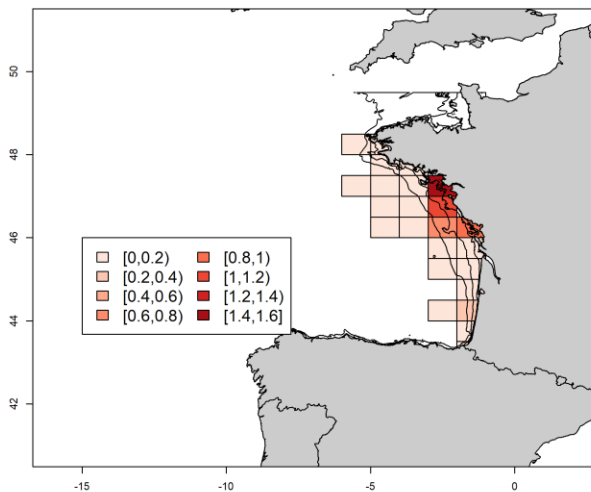
scale approx 1:12,000,000
0 100 200 300 km

Répartition spatiale des captures de sardine

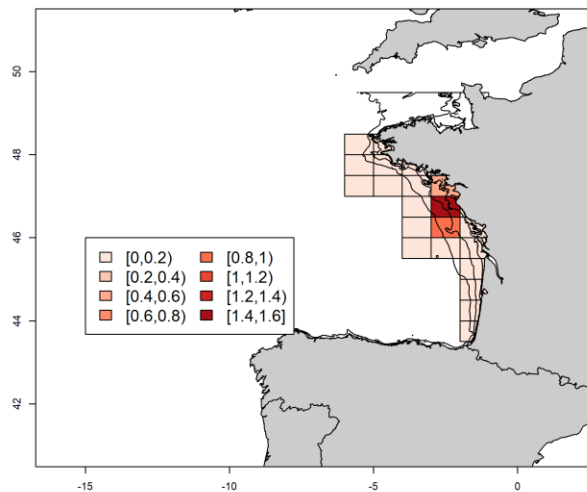


Métier « chalut_boeuf_pélagique »

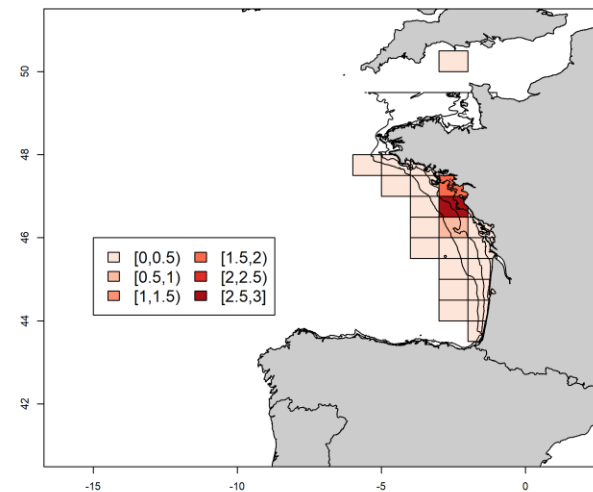
Sardine catches (1E6) kg in 2012



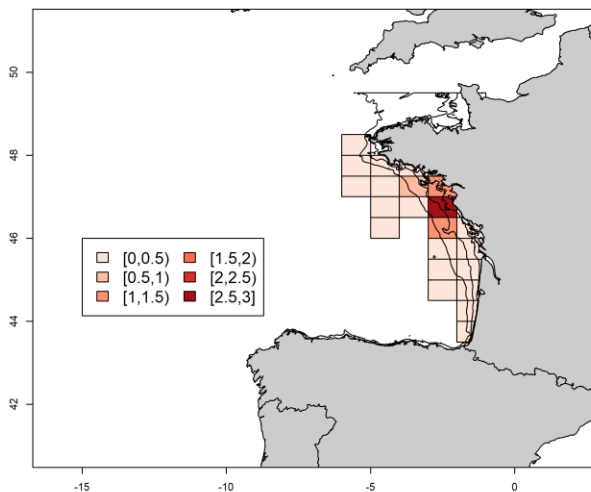
Sardine catches (1E6) kg in 2013



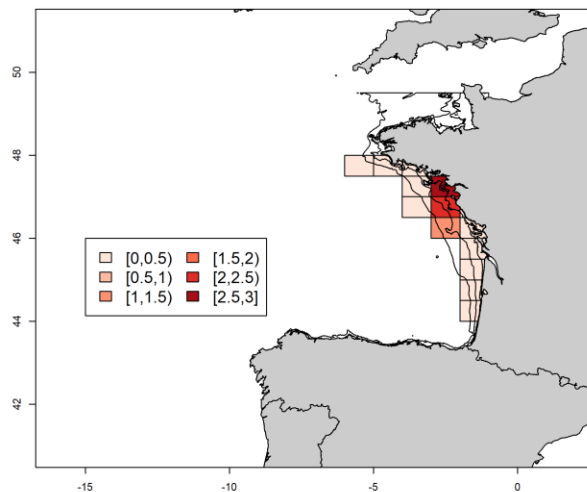
Sardine catches (1E6) kg in 2014



Sardine catches (1E6) kg in 2015



Sardine catches (1E6) kg in 2016



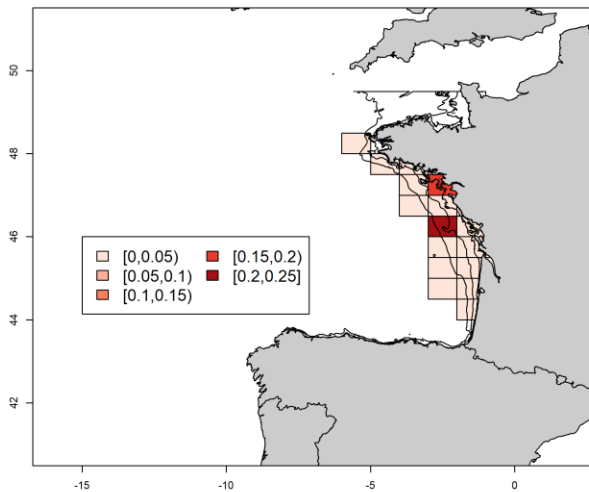
scale approx 1:12,000,000
0 100 200 300 km

Répartition spatiale des captures de sardine

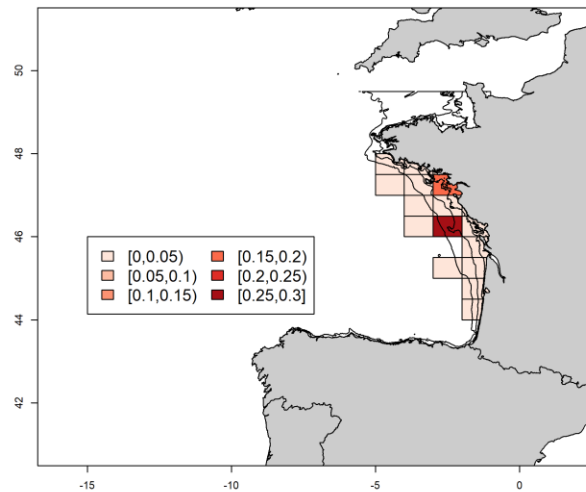


Métier « chalut_fond_jumeaux »

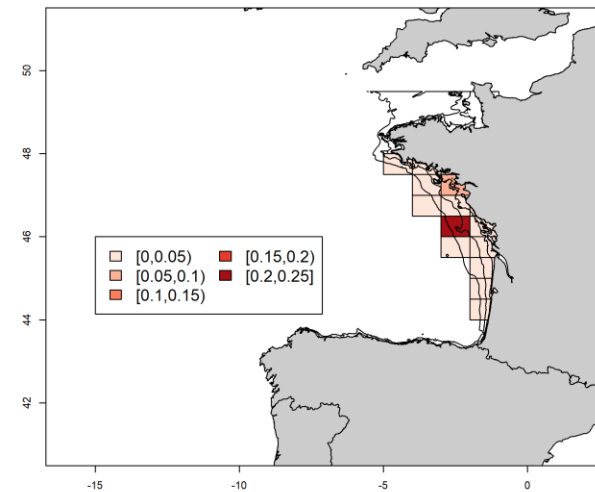
Sardine catches (1E6) kg in 2012



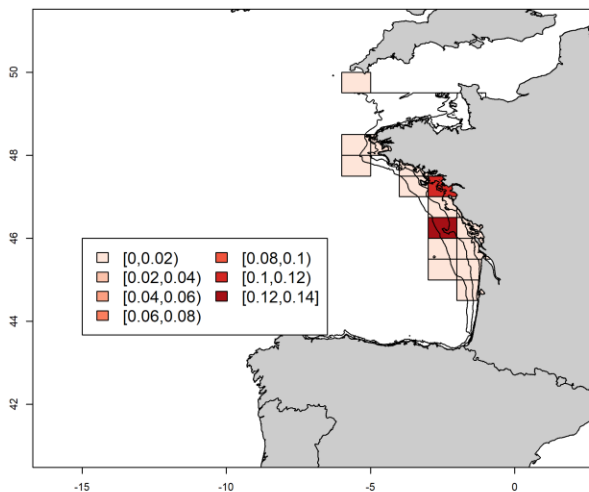
Sardine catches (1E6) kg in 2013



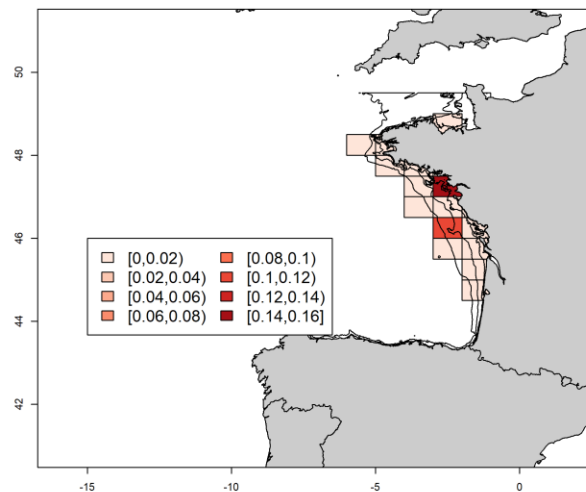
Sardine catches (1E6) kg in 2014



Sardine catches (1E6) kg in 2015



Sardine catches (1E6) kg in 2016



scale approx 1:12,000,000
0 100 200 300 km

point PELGAS

